

CONTACT US:

Telephone - 0800 032 1986

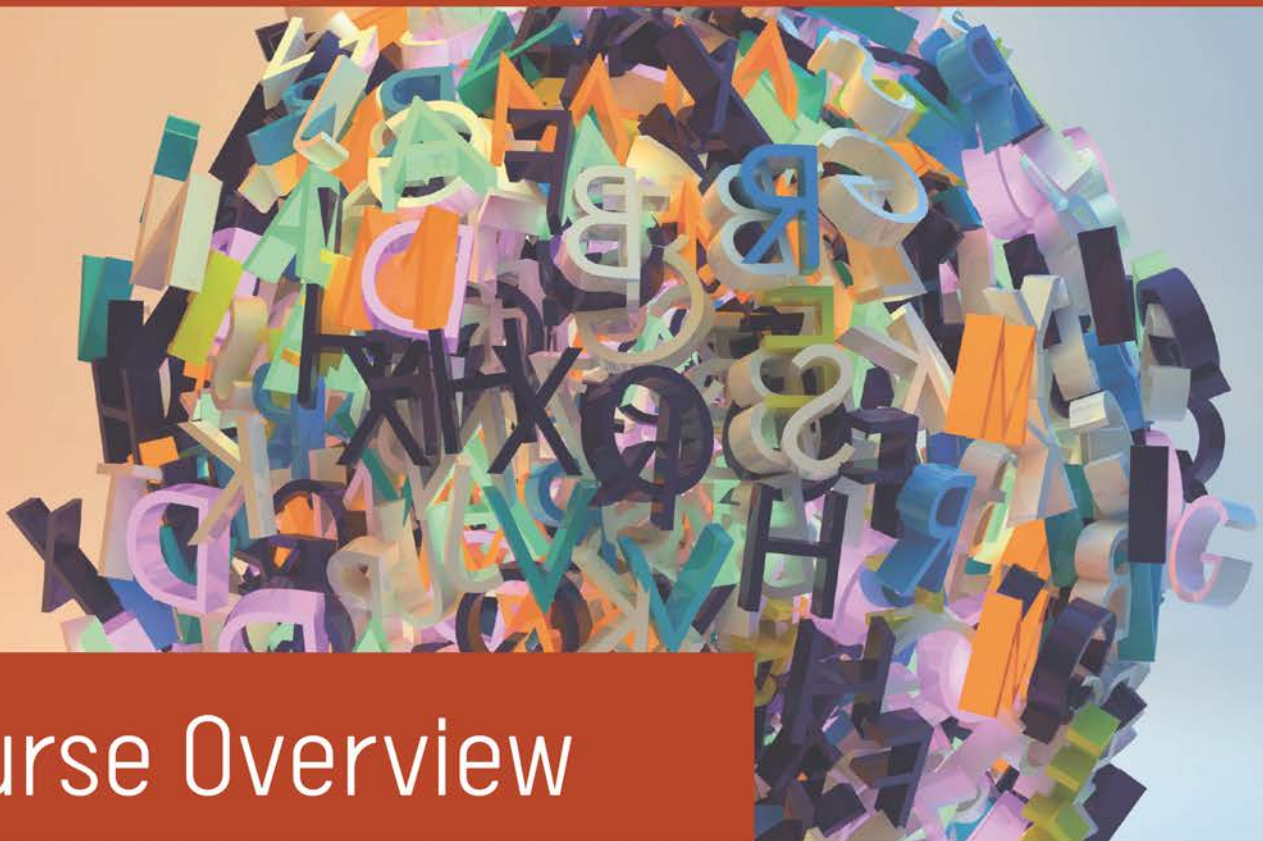
Email - distancelearning@hlcollege.ac.uk



Herefordshire,
Ludlow & North
Shropshire College



Level 2 Certificate in Understanding Specific Learning Difficulties



Course Overview

With approximately 15% of people being affected by Specific Learning Difficulties (SpLDs), it is important for individuals to develop their understanding of what SpLDs are and how they can affect the lives of those impacted by them. From dyslexia and dyscalculia to ADHD and DCD, there are many types of SpLD and some people are affected by more than one.

This course will help to identify ways of supporting individuals with dyslexia and other SpLDs. By completing the course, learners will develop their knowledge and understanding of dyslexia and other Specific Learning Difficulties. The units and topics included are ideal for learners who are looking to support individuals with SpLDs in any environment, be it at home, in the workplace, or in schools.

<https://www.hlcollege.ac.uk/courses/5b052fdc1c952/Distance-Learning-Courses>



Level 2 Certificate in Understanding Specific Learning Difficulties

Who is suitable?

This course is ideal for learners who wish to develop their knowledge and understanding of Specific Learning Difficulties. This could include teaching staff that wish to further their understanding of dyslexia, ADHD and other Specific Learning Difficulties, as well as employers who are looking for ways to support their workforce. This course is suitable for learners aged 19 or above.

What you will learn

This course is split into five manageable units:

Unit 1: Understanding Specific Learning Difficulties

Unit 2: Understand the Effects of Specific Learning Difficulties

Unit 3: Understanding the Diagnosis of Specific Learning Difficulties

Unit 4: Understanding Supporting Individuals with Specific Learning Difficulties

Unit 5: Understanding the Context of Specific Learning Difficulties

Learning Method

Studying via distance learning means you can choose when and where you study.

This course is available:

 **PAPER-BASED**

 **PAPER-BASED LEARNING WITH ONLINE ASSESSMENTS**

Benefits

- Gain a nationally recognised qualification
- Develop an enhanced knowledge of dyslexia and other Specific Learning Difficulties
- Courses are delivered as distance learning, allowing learners to choose when and where to study
- Personal tutors are assigned to ensure learners have the support needed to succeed