



CONTACT US:

Telephone - 0800 032 1986

Email - distancelearning@hlcollege.ac.uk

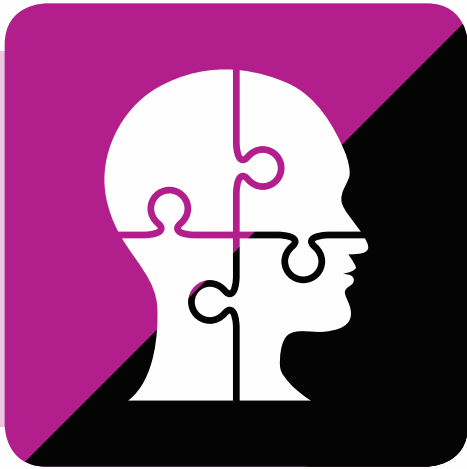
Level 2 Certificate in Understanding Autism

Course overview

Autism is a condition which presents itself as a wide spectrum of disorders, and is prevalent through the UK. People who have autistic spectrum disorders can be affected differently, with cases ranging from mild to severe.

Throughout this qualification, learners will gain an understanding of the different spectrum of autistic disorders and how they can affect people in a variety of ways, as well as explore the importance of using a person-centred approach to provide support. Learners will also understand how to use appropriate communication skills and positive behaviour to encourage individuals with autistic spectrum conditions to live fulfilling and independent lives.





Level 2 Certificate in Understanding Autism

Who is suitable?

This course is suitable for anyone who wishes to develop their understanding of autism and the principles of supporting individuals to live healthy and fulfilled lives. The course will benefit anyone working, or looking to work, with individuals who have an autistic spectrum condition.


Learning method

This course is split into six manageable units:

Studying via distance learning means you can choose when and where you study.

This course is available:

 Paper-based

 Paper-based learning with online assessments.

no exams
just assessments

What you will learn

Unit 1: Introduction to autism

Unit 2: Using a person-centred approach to support individuals with autism

Unit 3: Communication and social interaction in individuals with autism

Unit 4: Sensory processing, perception and cognition in individuals with autism

Unit 5: Supporting positive behaviour in individuals with autism

Unit 6: Supporting individuals with autism to live healthy and fulfilled lives

Benefits

- Gain a nationally recognised qualification
- Improve your skills to help create a long-standing career pathway in your chosen industry
- Courses are delivered as distance learning, allowing learners to choose when and where to study
- Personal tutors are assigned to ensure learners have the support needed to succeed.

